

# BURG<sup>NRL</sup>

Nasser Rashid Lootah Trading



## eco<sup>2</sup>

Solar Technology

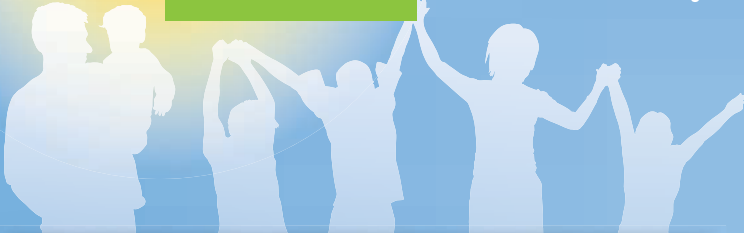


## economy

- High efficiency
- Short amortization period of the initial investment
- Long life expectancy

## ecology

- CO<sup>2</sup> emissions savings ca. 1400kg/yr
- Environmental friendly manufacturing processes
- 100% recyclable raw materials



**Green energy**

The solar water heater eco<sup>2</sup> is designed to combine sufficient hot water for many years and environmental protection!

**Technical specifications**

**Hot water tank**

- ▼ High quality enamelling against internal corrosion, according to DIN 4753 to ensure long life expectancy
- ▼ Insulated by high density expanded polyurethane to maintain hot water temperature all night long
- ▼ Cathodic protection with magnesium anode according to DIN 4753/6
- ▼ Thermostat and electric immersion heater of 3,5KW

**Collector**

- ▼ High selective aluminium absorber with laserwelded copper risers of harp design
- ▼ Glass wool insulation
- ▼ Aluminium profile casing
- ▼ Low iron special solar glass tempered



160/2 ES

200/2.5 ES

**TECHNICAL DIMENSIONS**



	Tank	Quantity of collectors	Collector's Dimensions (Height x Length)(mm)	Gross Collector(s) area (m <sup>2</sup> )		A (mm)	B (mm)	C (mm)
						45°/30°	45°/30°	45°/30°
160/2 ES	160	1	1500 x 1300	2,00		1300	1720 / 1888	1540 / 1270
200/2.5 ES	200	1	2000 x 1250	2,50		1300	2130 / 2340	1820 / 1508
300/3 ES	300	2	1500 x 1000	3,00		2150	1720 / 1888	1540 / 1270
300/4 ES	300	2	2000 x 1000	4,00		2150	2130 / 2340	1820 / 1508



Certifications: Solarkeymark - EAOT - ISO 9001





## [ES Selective Collector]



High efficiency and performance at  
best value for money!

## ES Selective Collector

Having a 35 year experience in the design and production of high quality and robust collectors, offers a high selective surface collector with laser welding for exceptional performance.

The ES collector is designed and manufactured to exploit the maximum amount of solar radiation even in areas with low insolation, achieving in this way low cost energy.

The combination of high efficiency and competitive pricing enables value for money installations.

### The ES collector's features are:

- Anodized aluminium frame
- Aluminium back cover
- Tempered solar glass 4 mm thick
- Absorber with High Selective aluminium fin
- Laser Welded on Copper risers 8 mm thick
- with 22 mm headers
- 30 mm Glass Wool back insulation and 10 mm side insulation
- EPDM gasket and silicon foam for Sealing

Technical specifications					
		195 ES/200 ES	230 ES	250 ES	275 ES
<b>Collector</b>					
External Dimensions	length	1503/2006 mm	1893 mm	2006 mm	2260 mm
	width	1305/1007 mm	1183 mm	1257 mm	1180 mm
	height	85 mm	85 mm	85 mm	85 mm
Weight		35 kg	36 kg	41 kg	46 kg
Gross area		1,96/2,02 m <sup>2</sup>	2,25 m <sup>2</sup>	2,52 m <sup>2</sup>	2,66 m <sup>2</sup>
Cover material		4 mm Tempered glass			
<b>Absorber</b>					
Aperture area		1,79/1,83 m <sup>2</sup>	2,03 m <sup>2</sup>	2,33 m <sup>2</sup>	2,52 m <sup>2</sup>
Absorber material	Selective aluminium fin				
	laser welded copper risers $\varnothing$ 8 mm	11/8	10	11	10
		Header and footer copper pipe 22 mm			
Surface treatment		Selective aluminium			
Absorption coefficient		a > 0,94			
Emission coefficient		e < 0,05			
Fluid content		1,5 L	1,8 L	1,9 L	2,5 L
<b>Insulation and casing</b>					
Insulation material		Glass wool			
Insulation thickness		30 mm			
Casing material (framework/back cover)		Anodized aluminum			
Sealing material		EPDM			
Diameter of connections		$\varnothing$ 22 mm			
<b>Limitations and efficiency</b>					
Maximum temperature of operation		165°C			
Maximum operating pressure		16 bar			
Instantaneous efficiency (ITW)		$\eta_0 = 0,801$			
Heat loss coefficient (ITW)		$a_1 = 3,653$			



250 ES

